



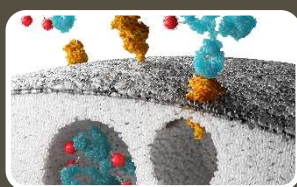
GSK R&D Data Strategy

External

Key Messages



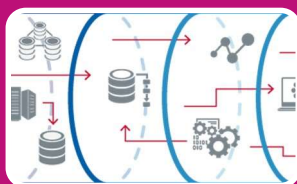
Tech is critical to the R&D strategy to use data and AI to discovery transformational medicines



We are trying to build deep multi-dimensional models of disease



This strategy only works at scale – you need lots of different data types

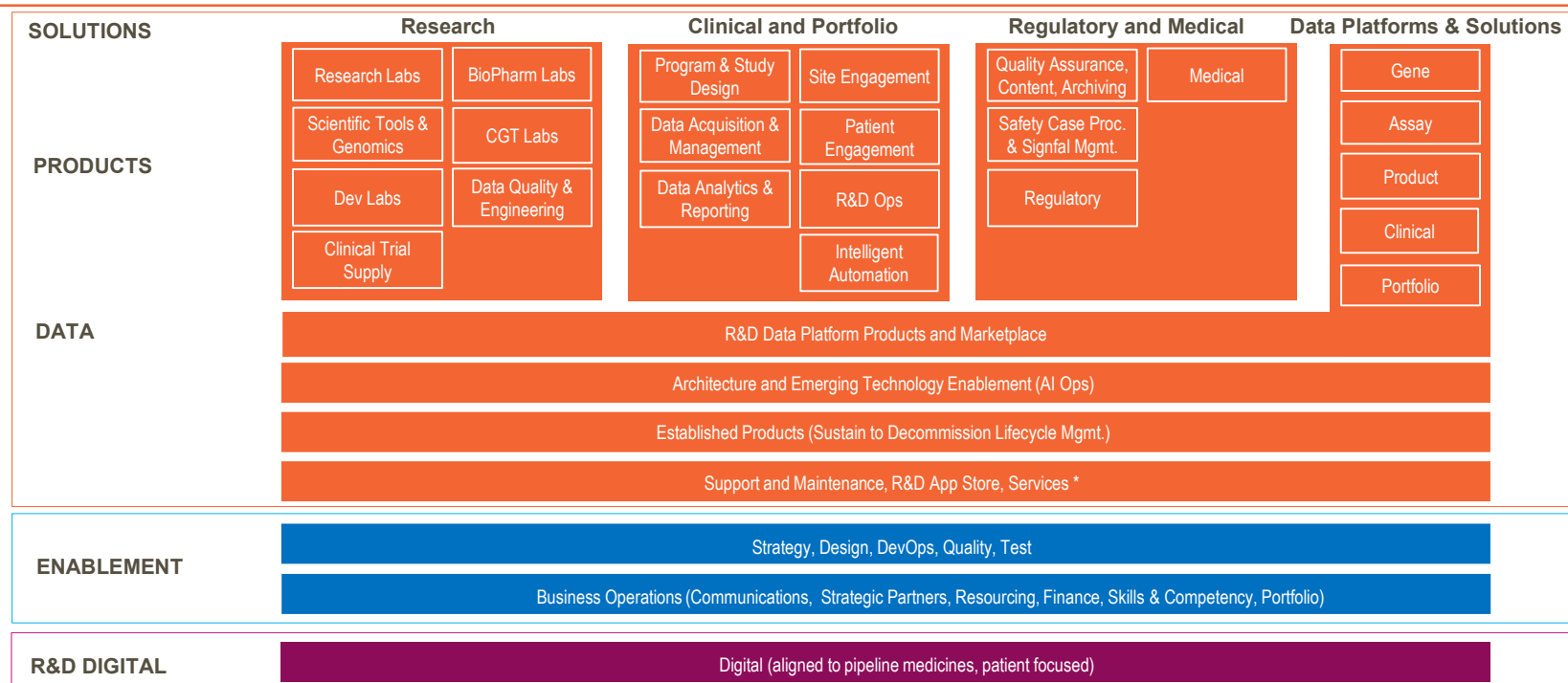


The primary challenge for Tech is to automate the end-to-end flow of data

R&D Data and Tech “Product” Operating Model

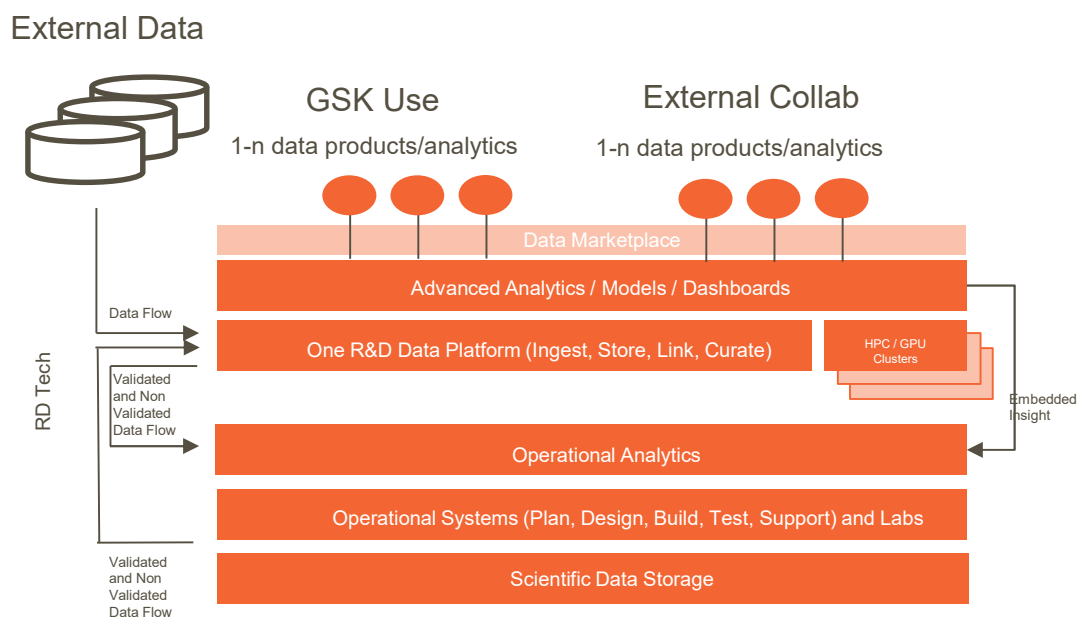


Tech Solutions, Products, and Data accelerate the discovery and development of transformational medicines



* Services include archive and financial process

R&D Data and Technology Platform





How is Tech enabling this strategy?

End-to-end automated data flow is key

