



healthverity®

PRISME Forum

Andrew Goldberg
Chief Operating Officer
November 2018

Activating data across the network



Foundation for the rapid creation, exchange and management of healthcare and consumer data in a fully-interoperable, privacy-protecting manner

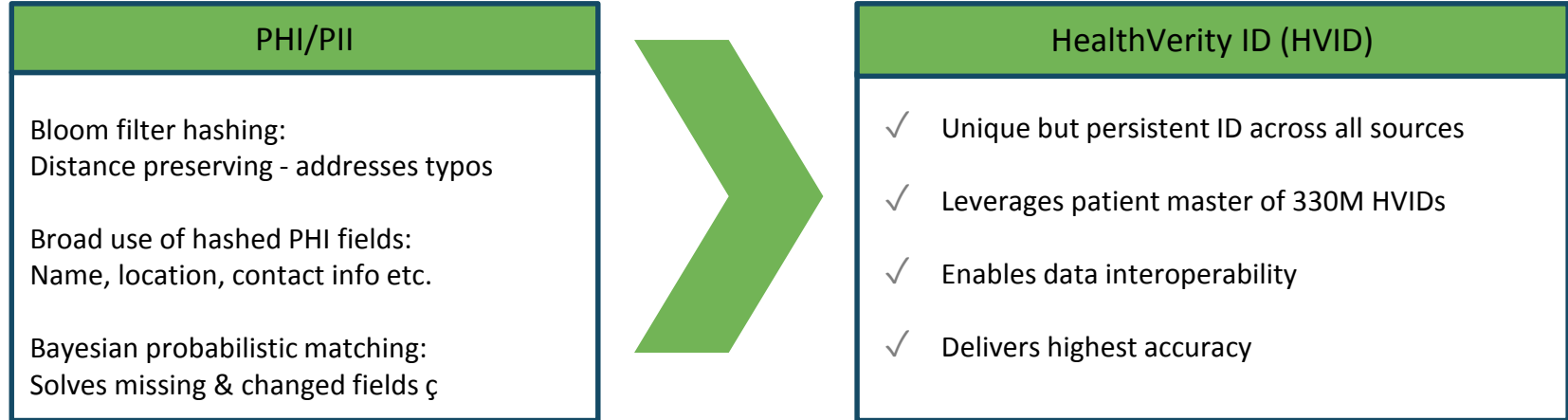
AI/ML data readiness obstacles

- Guiding principals of FAIR - Findable, Accessible, Interoperable, Reusable
- Data widely dispersed both within individual companies and between companies
- Biopharmaceutical companies self-evidently have less data on which to train AI/ML
- Data is rarely in a form amenable to use to train AI/ML
- Limited, timely access to sufficient, high-quality data, on which AI systems can be trained

HealthVerity obliterates these obstacles to unleash connected data for AI/ML

Game-changing technology – The HVID

HealthVerity Census software connects the patient journey accurately and effectively:



Activate the data you have

- Pharma is sitting on a treasure trove of its own data
- HealthVerity Census is a SaaS solution that tokenizes and links data wherever it resides
- Connects the patient journey
- HIPAA and privacy-compliant
- Enables Pharma to leverage its own data for AI/ML



Activate the data you need



Links over 50 traditional and emerging data sources across five major data types for over 330 million US patients



Total data supplier interoperability for de-identified data; highest accuracy available



Build custom cohorts in minutes; contract and receive data in standard data models within days to feed AI/ML



Custom cohorts for AI/ML on-demand

Select diagnoses of choice

Select data providers that best fit population

Explore data attributes

healthverity marketplace All counts based on 24 months

Search: COPD

Search Criteria (1) Hide

Diagnosis: J44

Any Save Load Clear

8.8m patients matched

Provider	Patients Matched	Action
PrivateSource14	3.2m	Remove
PrivateSource34	1.1m	Remove
Allscripts	984k	Remove
Practice Insight	720k	Remove

Counts by: patients providers

Overview Medical Consumer

Private Source 14 Private Source 34 Allscripts Practice Insight

Acxiom Private Source 99

An overview of selected datasets Show Criteria

Venn Diagram Data:

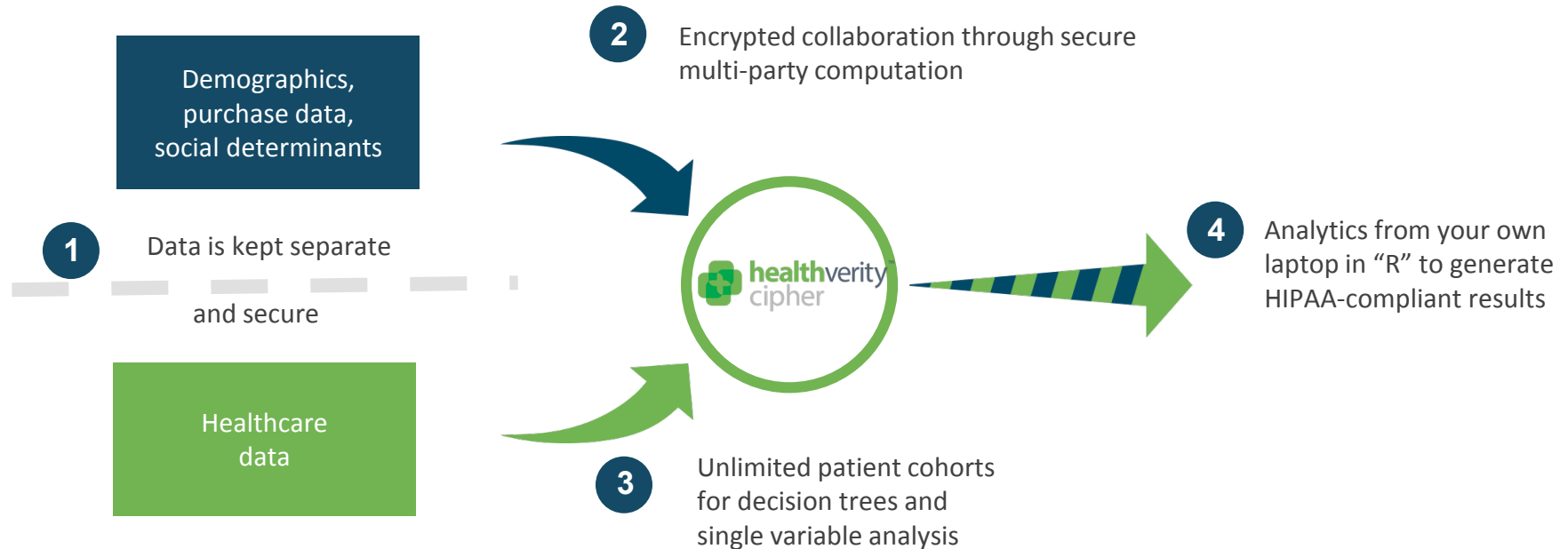
- 142.0m Consumer (Acxiom, Private Source 99)
- 5.1m Medical (Private Source 14, Private Source 34, Allscripts, Practice Insight)
- 3.4m Common
- 143.7m Total

Intersect data types to build optimal cohort

License the cohort of your choice

360 degree social view for AI/ML

HealthVerity Cipher virtually combines clinical and consumer data at the patient level to drive breakthrough insights:



Best fit data drives the best AI/ML

Multiple Sclerosis patient cohort

- Link website, patient hub, registry and specialty pharmacy claims internally
- Track patient acquisition and adherence behaviors
- Link internal cohorts to HealthVerity Marketplace medical claims, lab results and consumer data
- Understand diagnosis, time to treat, drug switching and social determinants
- Are MS patients living an active life (travel, exercise, culture) or homebound?

The HealthVerity advantage



Activate internal data



Activate third party data



Activate social determinants



Breakthrough AI/ML for Pharma

- Best fit data
- Custom, comprehensive cohorts
- Unlimited potential

Andrew Goldberg

agoldberg@healthverity.com

Chief Operating Officer

908.268.5983

healthverity.com

1818 Market Street • Suite 200 • Philadelphia, PA 19103