

We are at the **beginning** of a transformative era in science...

Drug Discovery

In Silico Discovery

Deep Neural Network that can predict intermediate cell variables
Precision Cohorts creation using Real-World Data

Study Design

Data-Driven Design

Optimize clinical trial design by studying learnings from the past trials
Machine Learning based study feasibility.
Data Driven Budgeting

Trial Execution

Seamless Execution

AI-based workflow automation between CRO, site and sponsor
NLP and ML modeling on EMR data and clinical notes to find patients

Commercial

Quantified Outcomes

Med Adherence powered by computer vision and AI
NLP and AI combination based social listening in pharmacovigilance
Pricing Analytics using ML

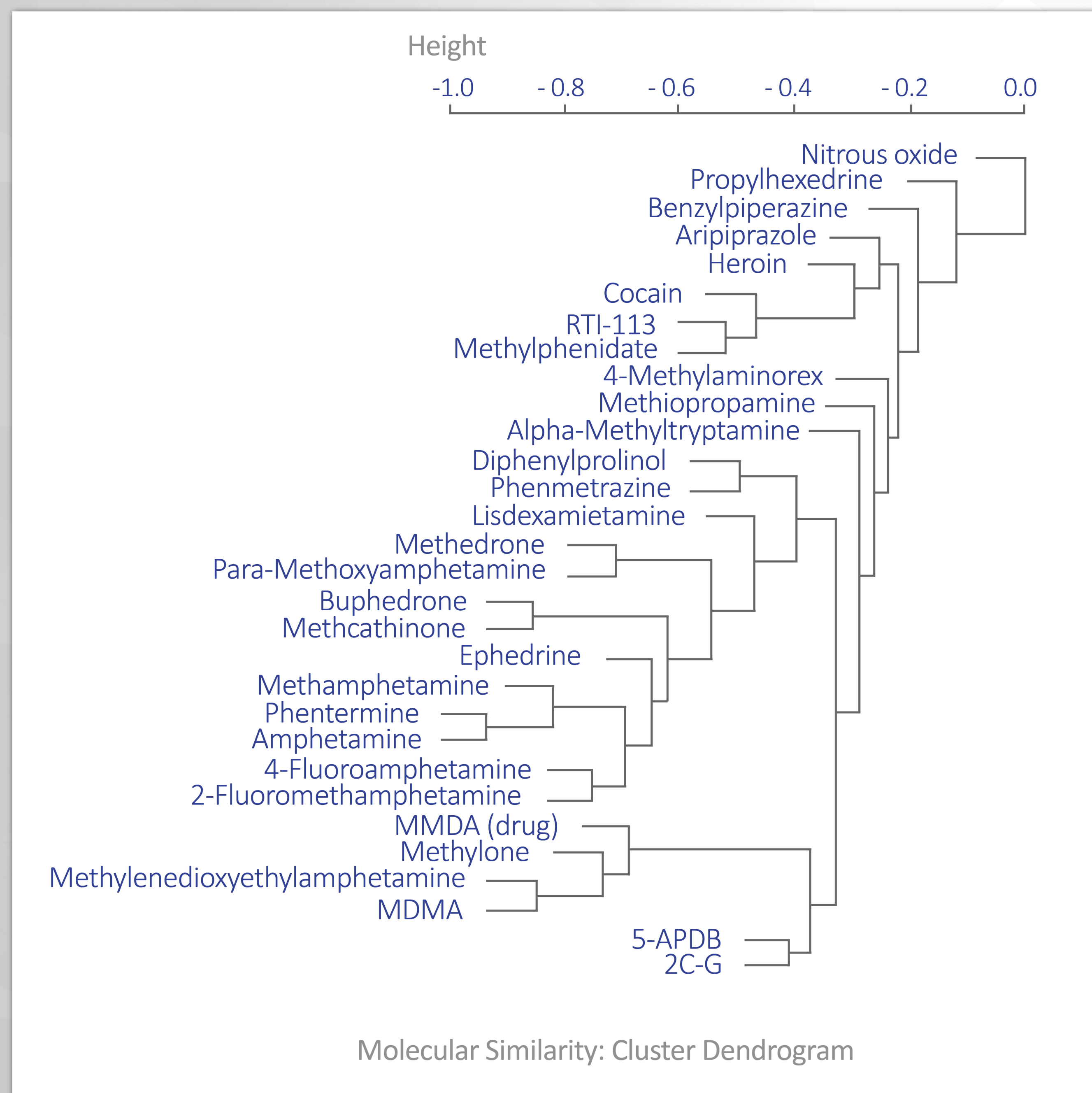
SEARCH

Euphoria NEAR Fluoroamphetamine

SIMILARITY THRESHOLD

0.5 0.65 1

FIND



30 RESULTS FOUNDS

Sort by: **Threshold Asc.** | Threshold Desc. | Name A-Z | Name Z-A | More... ▾

<<FIRST <PREV 1 2 3 4 5 NEXT> LAST>>

4-fluoroamphetamine

<https://en.wikipedia.org/wiki/4-Fluoroamphetamine>

4-Fluoroamphetamine (4-FA; 4-FMP; PAL-303; "Flux"), also known as para-fluoroamphetamine (PFA) is a psychoactive research chemical of the phenethylamine and substituted amphetamine chemical classes. It produces stimulant and entactogenic effects, and is described subjectively as being between amphetamine and MDMA. As a recreational drug, 4-FA is sometimes sold along with related compounds such as 2-fluoroamphetamine and 4-fluoromethamphetamine.

Methamphetamine

<https://en.wikipedia.org/wiki/Methamphetamine>

Methamphetamine (contracted from N-methylamphetamine) is a strong central nervous system (CNS) stimulant that is mainly used as a recreational drug and less commonly as a second-line treatment for attention deficit hyperactivity disorder and obesity. Methamphetamine was discovered in 1893 and exists as two enantiomers: levo-methamphetamine and dextro-methamphetamine. Methamphetamine properly refers to a specific chemical, ...

2-Fluoromethamphetamine

<https://en.wikipedia.org/wiki/2-Fluoromethamphetamine>

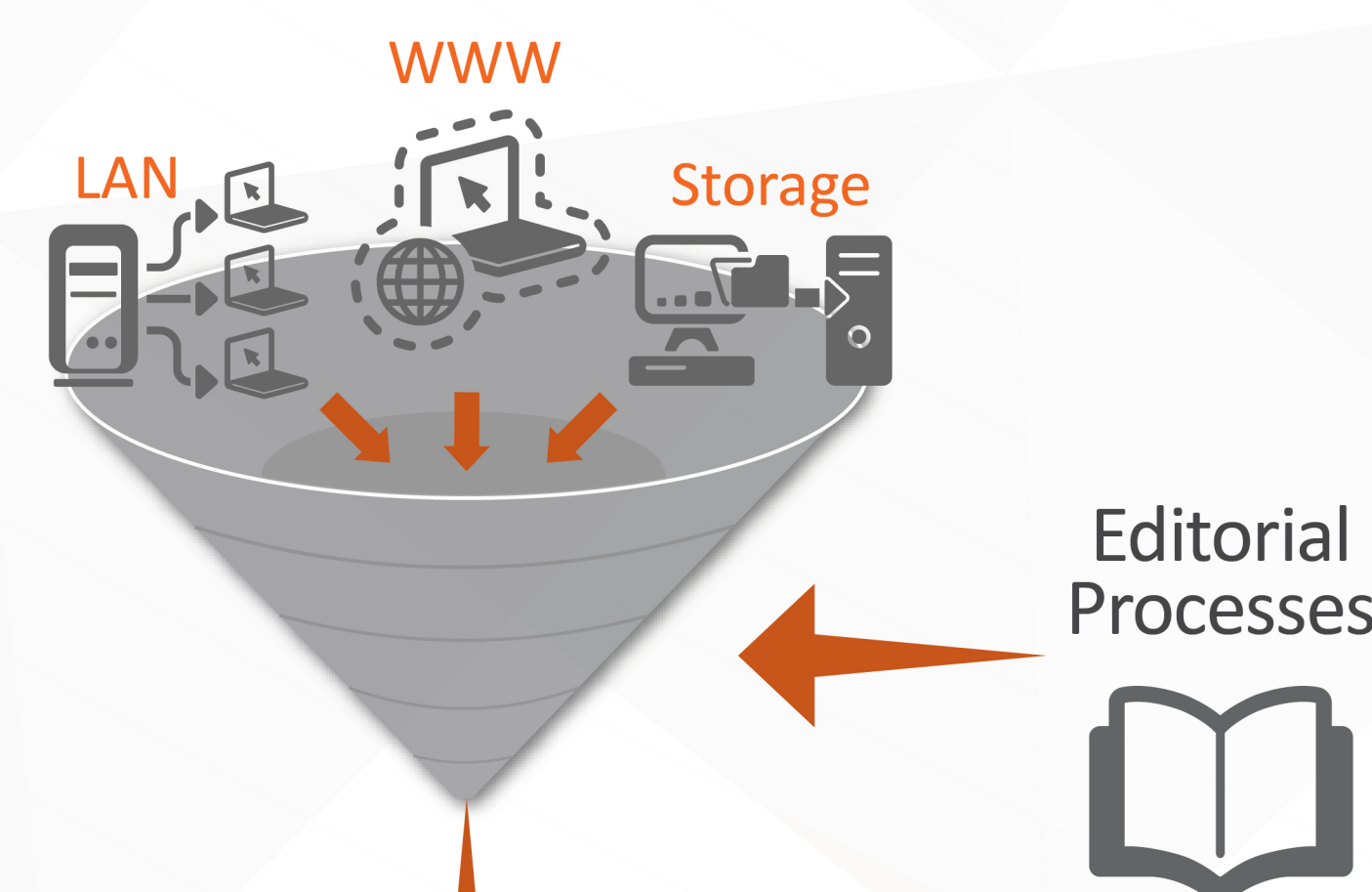
2-Fluoromethamphetamine (2-FMA) is a stimulant drug from the amphetamine family which has rarely been found possessed as a designer drug. Effects include euphoria, loss of appetite, increased energy, insomnia, focus enhancement, bronchodilation, motivation enhancement, and dry mouth. It is often compared by its users in anecdotal reports to Lisdexamfetamine (Vyvanse) in regards to 2-FMA's dosage, duration, and general effects profile. What is unique to ...

Phentermine

<https://en.wikipedia.org/wiki/Phentermine>

Phentermine (contracted from phenyl-tertiary-butylamine), also known as α,α-dimethylphenethylamine, is a psychostimulant drug of the substituted amphetamine chemical class, with pharmacology similar to amphetamine. It is used medically as an appetite suppressant for short term use, as an adjunct to exercise and reducing calorie intake. Phentermine may produce cardiovascular, gastrointestinal, and CNS side effects; rare cases of pulmonary hypertension...

Content Architecture



NLP Enrichment



Taxonomy & Ontology Enrichment

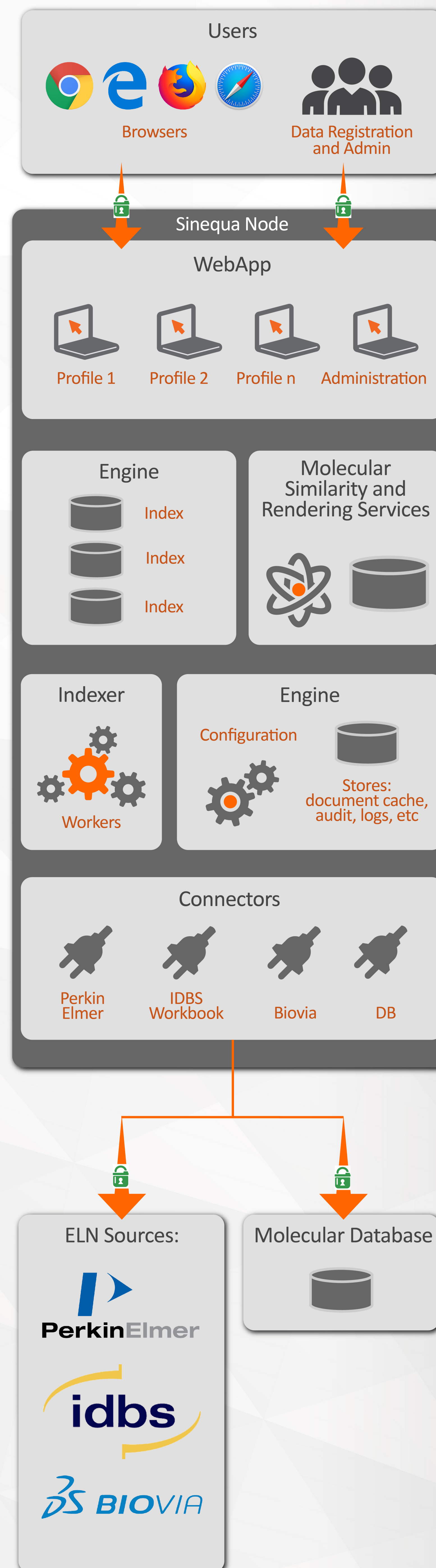


INDEX

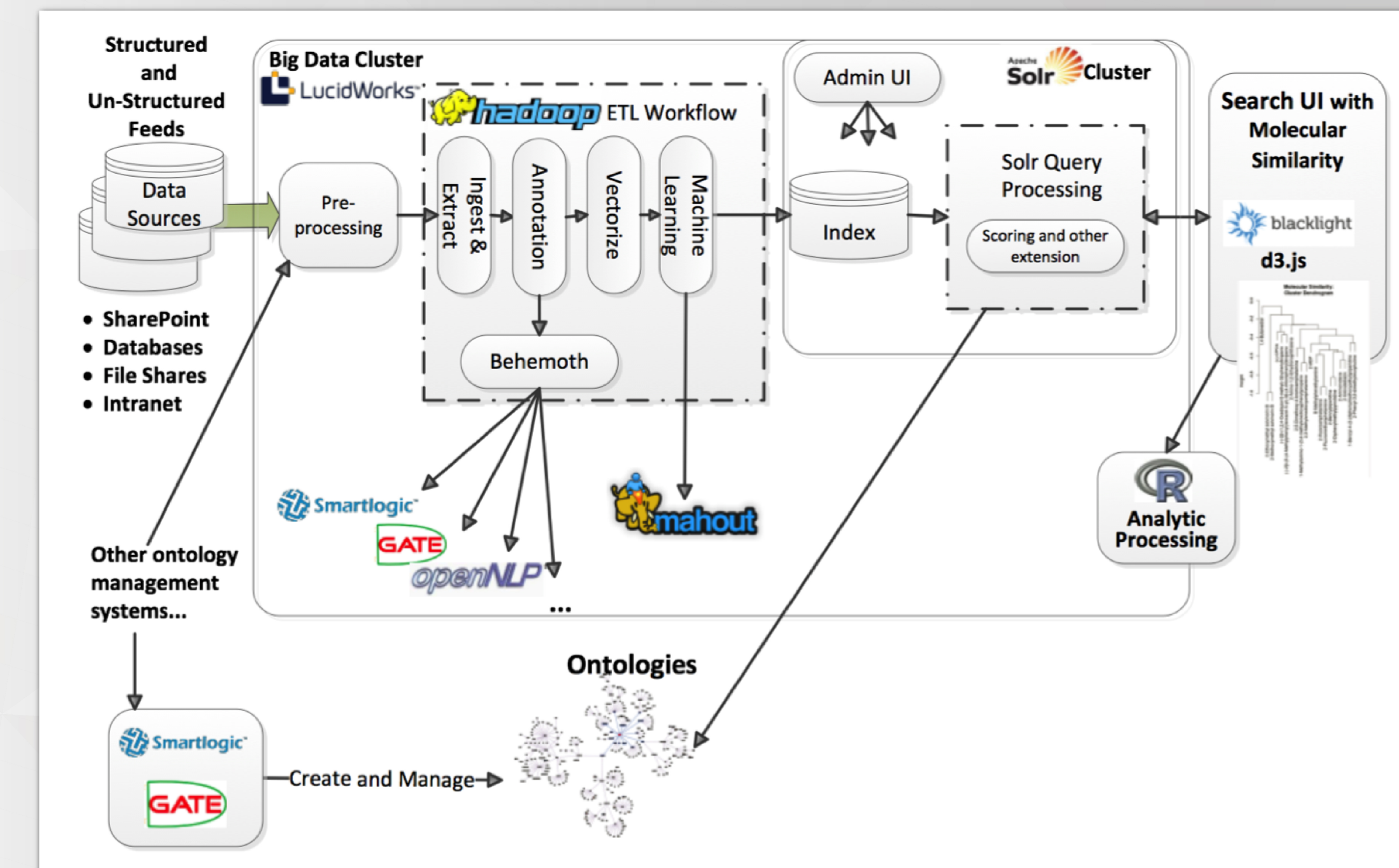
Search & Retrieval



Solution Overview



Reference Architecture



Data Curation & Search at Scale

