

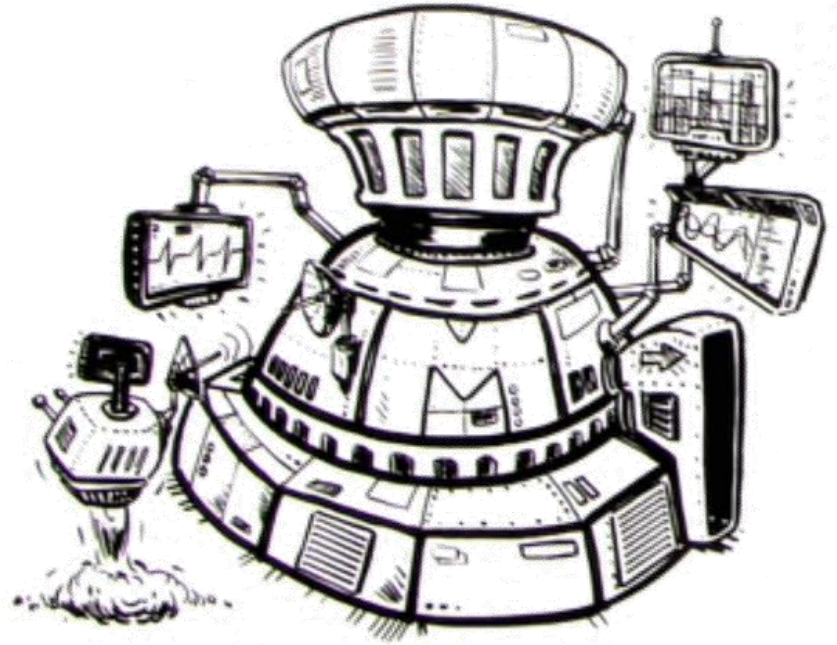
Varying Degrees of Success

Chris Bingham



Success!

- Capable
- Reliable
- 98% Very Satisfied
- But... What next?

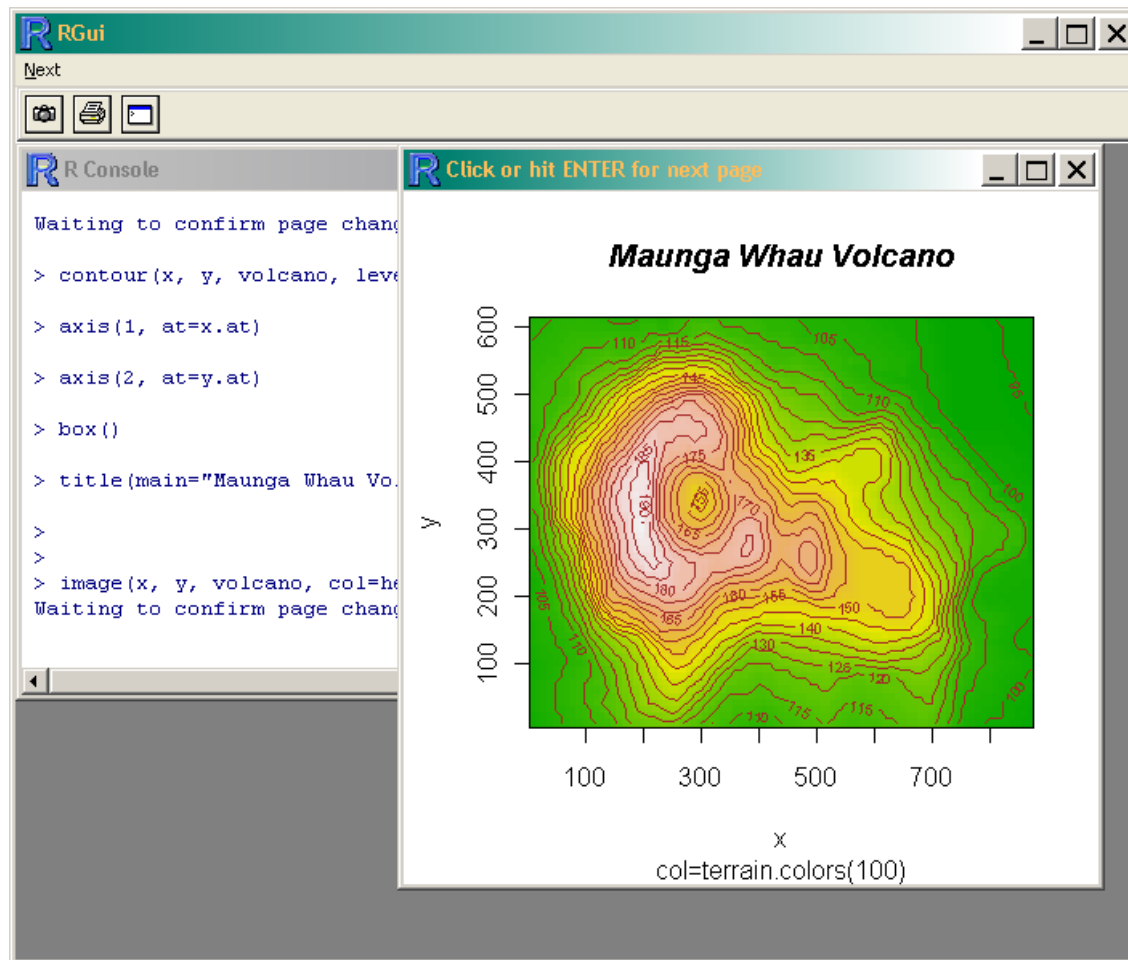


A Cure Worse Than The Disease

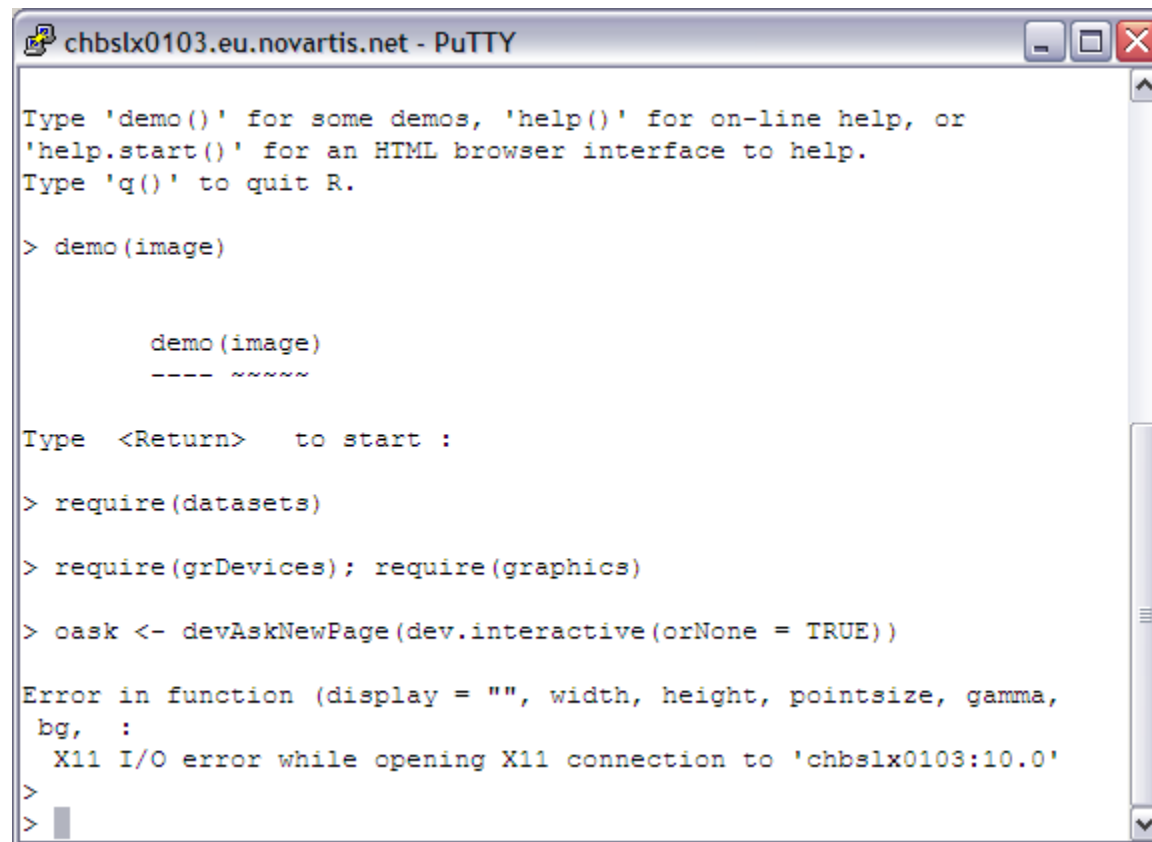
- Simulations slow
- Scientists inefficient
- Results not trustworthy
- But... very, very easy



A Cure Worse Than The Disease



A Cure Worse Than The Disease



```
chbslx0103.eu.novartis.net - PuTTY

Type 'demo()' for some demos, 'help()' for on-line help, or
'help.start()' for an HTML browser interface to help.
Type 'q()' to quit R.

> demo(image)

      demo(image)
      ---- ~~~~~

Type <Return> to start :

> require(datasets)

> require(grDevices); require(graphics)

> oask <- devAskNewPage(dev.interactive(orNone = TRUE))

Error in function (display = "", width, height, pointsize, gamma,
  bg, :
  X11 I/O error while opening X11 connection to 'chbslx0103:10.0'
>
>
```

Reality

- Not many people used it
- Too scary
- Most still used laptops



It's a Windows World, Linux is Just Living in it

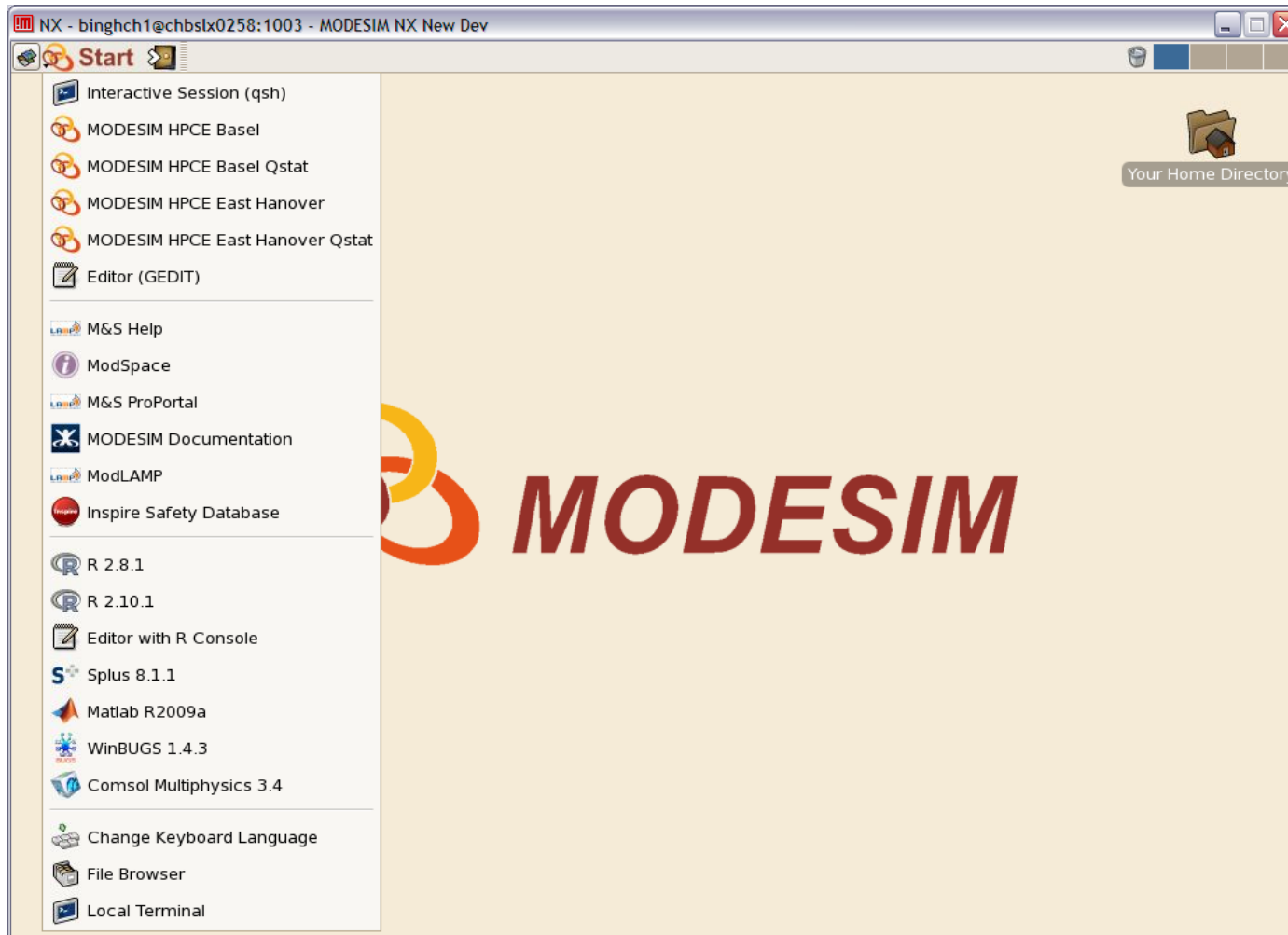
- Camouflage Linux
- Nice, friendly buttons
- Hide the command prompt
- It should just work



Solution

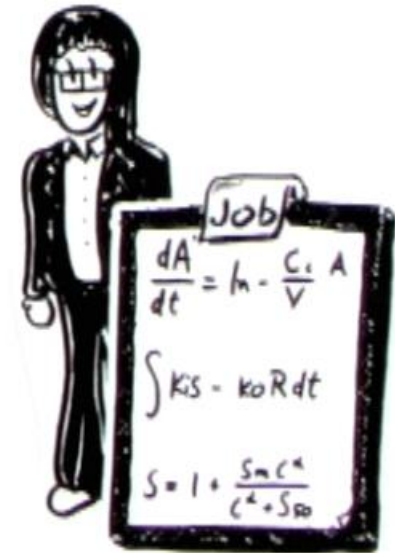
- Gnome
- Customisation
- NoMachine NX

MODESIM NX



Success Again!

- Usage increased
- Maintained feedback rating
- 50% productivity increase

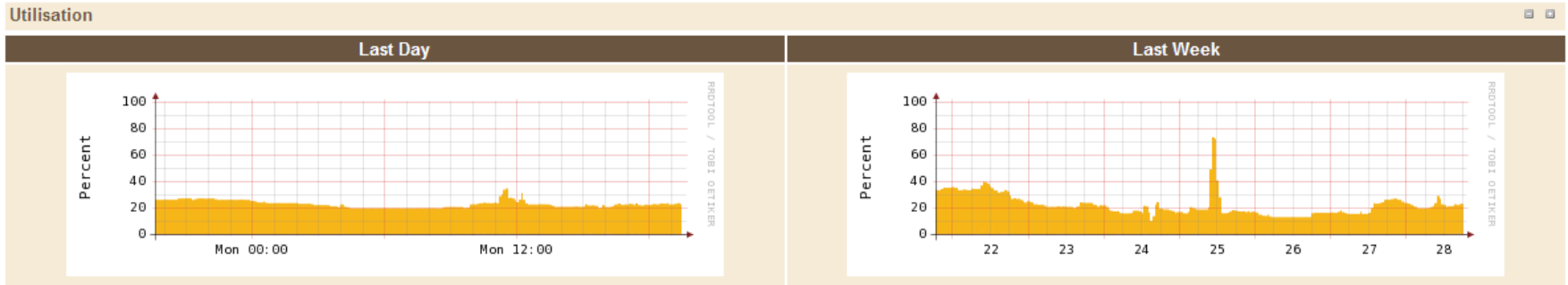


Qstat Web App



Clusters | Jobs | Queues | Nodes | Licenses | Refresh

Basel/chbs 2011-03-28_19:33:40



Search for Jobs

Job ID Number	User Name
<input type="text"/>	<input type="text"/>
<input type="button" value="Search"/>	<input type="button" value="Search"/>

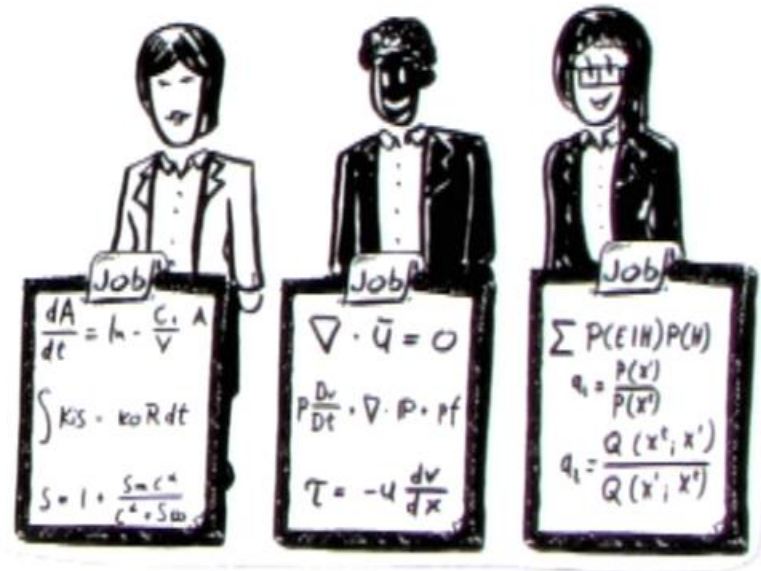
66 active jobs

Owner	Job ID Number	Task Number	Name	Queue	Start Time	State
sarkaan4	689241		Interactive	interactive.q@chmsc07	2011-03-15T17:24:16	r
loweph1	691695		bootstrap	all.q@chmsc04	2011-03-17T10:32:03	r
loweph1	691754		bs_pr1_58.mod	all.q@chmsc04	2011-03-17T10:33:18	r
loweph1	691758		bs_pr1_62.mod	all.q@chmsc02	2011-03-17T10:33:18	r
sandeol1	693144		Interactive	interactive.q@chmsc10	2011-03-18T11:48:35	r
matthiv1	697273		Interactive	interactive.q@chmsc05	2011-03-21T10:36:41	r



Even More Success!!

- Advertised available capacity
- Encouraged greater usage
- Attracted more scientists



What Next?

- Make it even easier!
- More web apps
 - Job submission
 - Historical job information
 - SLA reports



